



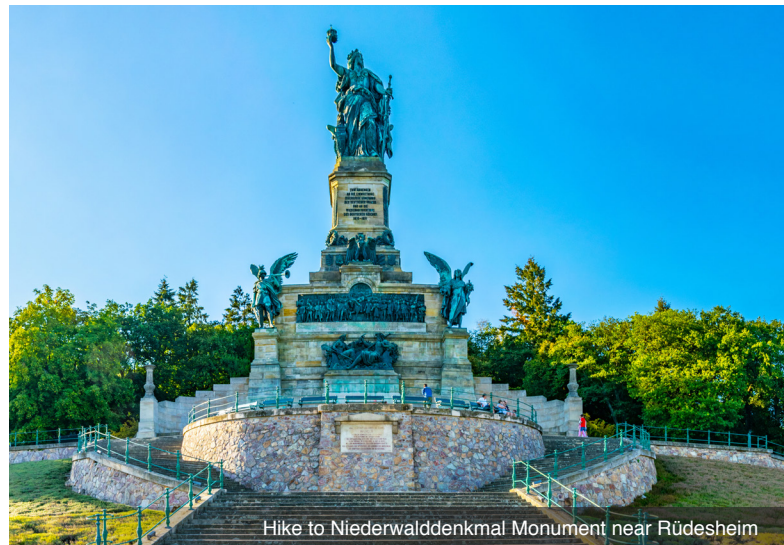
FREE
AIRFARE
WHEN BOOKED BY
12/31/23!

Rhine Castles & Moselle Vineyards

France • Germany • the Netherlands

Tour Dates: July 29 - August 9, 2024

Rhine Castles & Moselle Vineyards



DAY 1 Depart the USA: Depart the USA on your overnight flight to Zurich, Switzerland.

DAY 2 Zurich, Switzerland – Basel: Upon arrival at Zurich airport, you will be met and transferred to your innovative Emerald Cruises Star-Ship in Basel, where your friendly captain and crew will welcome your arrival. Please book your flight to arrive in Zurich before 2:00pm. **Meal: D**

DAY 3 Breisach, Germany – Colmar, France: Commence your magical morning with a tour of Colmar. As you walk down the cobblestone lanes, it's easy to imagine the characters from the Grimm's Fairy Tales here, where window boxes full of colorful blooms adorn the half-timbered façades. Alternatively, embark on a canoeing adventure on the banks of the Rhine. **Meals: B, L, D**
EmeraldACTIVE: Canoeing on the banks of the Rhine

DAY 4 Kehl, Germany – Strasbourg, France: This morning, dock in Kehl and journey by coach to the medieval capital of France's Alsace Region, Strasbourg. The best way to discover Strasbourg's charm is via its quaint waterways. Embark on an EmeraldPLUS traditional canal boat tour. Relax as you pass through petite France, full of storybook canals, half-timbered houses, and narrow lanes. Witness the covered bridges and the Vauban Dam before reaching the UNESCO World Heritage Neustadt imperial quarter, where many of Strasbourg's administrative buildings are based. This afternoon, enjoy free time to explore at leisure. **Meals: B, L, D**
DiscoverMORE: Alsace wine route with tasting (additional expense)

DAY 5 Mainz, Germany: Your day will start with a guided tour of Mainz and visit to the impressive sandstone cathedral of the tremendous Old Town. **Meals: B, L, D**
DiscoverMORE: Visit to Gutenberg Museum & workshop (additional expense)

DAY 6 Rudesheim: As part of your incredible EmeraldPLUS program, visit the grand Schloss Johannisberg Winery. Set in the breathtaking Rheingau region, the legendary Schloss Johannisberg is steeped in history, cultivating exquisite wine for over 1000 years. The first Riesling winery in the world, at Schloss Johannisberg, discover a unique wine culture and fabled history during this exclusive tour. Set over 124 acres in front of the Taunus mountains, the onsite 300-acre forest grows native oak to make the wooden barrels used for producing this exemplary wine. These extra-special barrels are then kept in the 900-year-old abbey cellar, known as 'Bibliotheca Subterranea', where over 25,000 precious wines are stored. Alternatively, participate in an active hike through vineyards to the historical Niederwalddenkmal Monument. **Meals: B, L, D**
EmeraldPLUS: Wine visit and tasting at Schloss Johannisberg
EmeraldACTIVE: Active hike to Niederwalddenkmal Monument

DAY 7 Cochem: Enjoy the enchanting town of Cochem during a guided tour of its well-preserved sites. Stroll through the quaint alleyways and see the remains of the historic town wall with its old fortifications alongside the town hall and its many other gems. **Meals: B, L, D**
EmeraldACTIVE: Cycling along the Moselle

DAY 8 Bernkastel: Dating back to 3000 BC, Bernkastel is situated along the banks of the Moselle River and is home to well-preserved buildings dating back to 1416. Enjoy a guided walking tour, where you will have the opportunity to stroll through the medieval marketplace with its gabled timber-framed houses, castle ruins and town gate. Or, take part in an active hike to the Landshut Castle Ruins overlooking the Moselle. **Meals: B, L, D**
EmeraldACTIVE: Active hike to Landshut Castle Ruins



Visit the iconic Kinderdijk Windmills

DAY 9 Koblenz: Wonderfully maintained inside and out, Marksburg Castle boasts a selection of typical interiors including the castle kitchen, the knight's hall, the armoury and an inviting wine cellar. The attractive light-stoned walls of the castle are protected by an outer fortress. With a single tower peering over the turrets and castle walls, it resembles something you would find in a Brothers Grimm tale.

Meals: B, L, D

EmeraldACTIVE: Hike to Marksburg Castle

DAY 10 Nijmegen, the Netherlands: Today you will visit the Kinderdijk Windmills, a UNESCO World Heritage site. This unique collection of nineteen authentic 18th-century windmills is considered a Dutch icon across the globe. **Meals: B, L, D**

DAY 11 Utrecht: As part of your EmeraldPLUS program, start the day by exploring a canal cruise through the Oudegracht or Old Canal. Not only is this the oldest in Utrecht but it is also older than the canals in Amsterdam. For centuries, along the water the wealthiest have built their mansions with the peculiarity of having warehouses and service entrances just above water level. Undoubtedly, the castle of Oudaen stands out among all the rest: an urban castle preserved despite being more than eight centuries old. **Meals: B, L, D**

EmeraldACTIVE: Guided bike tour near Utrecht

EmeraldPLUS: Canal cruise and cheese tasting

DAY 12 Amsterdam / USA: After breakfast, it's time to say farewell to your fellow guests and disembark the ship for your transfer to the airport, taking with you memories of all the beautiful destinations visited. **Meal: B**

Itinerary is subject to change.



Exceptional Inclusions

- **29 Meals:** 10 breakfasts, 9 lunches and 10 dinners
- **Airport transfers** on tour dates when air is provided by Mayflower Cruises & Tours
- Visit **three countries**
- **Ten-nights in a suite or stateroom** of your choice onboard the vessel
- **First-class service** by an English-speaking crew
- **Onboard Activity Manager** will support all EmeraldACTIVE excursions and host daily onboard wellness activities, games, classes and evening entertainment
- **All gratuities included**
- **Shore excursions** with English-speaking local guides
- Visit **UNESCO World Heritage Sites**
- Personal **listening device** for shore excursions
- **All meals included** onboard
- Variety of **international cuisine**
- Complimentary **regional wines, beer and soft drinks** with onboard lunches and dinners
- Complimentary **bottled water** in your stateroom
- Complimentary **WiFi** onboard
- Complimentary **bicycles onboard** for use ashore
- **All port charges included**

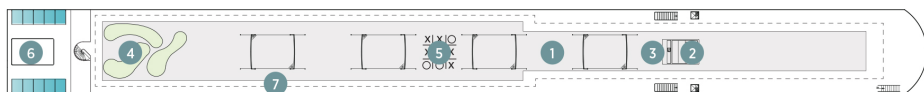
CRUISE ACCOMMODATIONS

Days 2 through 11 – Aboard an Emerald Cruises Star-Ship
Post-cruise hotel stays available in Amsterdam. Call for details.

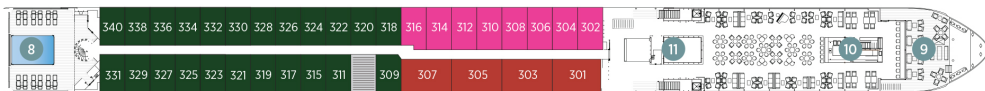
Emerald Cruises Star-Ships

Built: 2014-20 **Speed:** 15.5 mph **Staterooms:** 19 **Suites:** 72 **Length:** 443 ft. **Crew:** 47

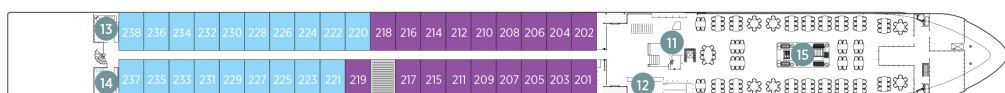
SUN DECK



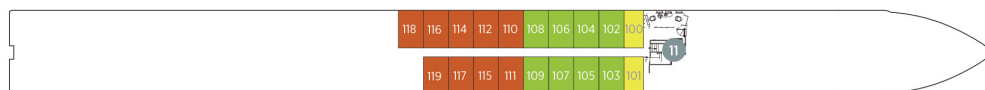
HORIZON DECK



VISTA DECK

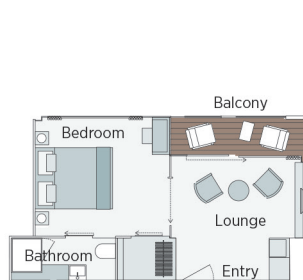


RIVIERA DECK



Public Areas and Ship Amenities

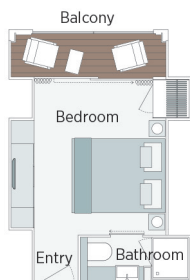
- 1 Sun Deck with Deck Chairs
- 2 Navigation Bridge
- 3 Sky Barbeque
- 4 Golf Putting Green
- 5 Games Area
- 6 Retractable Glass Roof
- 7 Walking Track
- 8 Daytime Pool / Evening Cinema
- 9 The Terrace
- 10 Horizon Bar and Lounge
- 11 Elevator
- 12 Reception
- 13 Wellness Area
- 14 Fitness Area
- 15 Reflections Restaurant



Owner's One-Bedroom Suite

315ft²

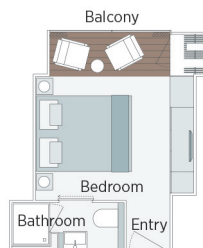
CAT SA



Grand Balcony Suite

210ft²

CAT S



Panorama Balcony Suite

180ft²

CAT A CAT B CAT C



Emerald Stateroom

162ft²

CAT D CAT E

Rhine Castles & Moselle Vineyards River Cruise

CAT	STATEROOM / SUITE	DECK	July 29 - August 9, 2024		SINGLE ROOM ADD
			PER PERSON TWIN		
			FULL FARE	SPECIAL FARE	
E	Emerald Stateroom	Riviera	\$5,895	\$4,776	\$4,476
D	Emerald Stateroom	Riviera	\$6,395	\$5,176	\$4,876
C	Panorama Balcony Suite	Vista	\$7,395	\$5,976	\$5,676
B	Panorama Balcony Suite	Vista	\$7,595	\$6,136	\$5,836
A	Panorama Balcony Suite	Horizon	\$7,795	\$6,296	\$5,996
S	Grand Balcony Suite	Horizon	\$8,845	\$7,136	N/A
SA	Owner's One-Bedroom Suite	Horizon	\$10,095	\$8,136	N/A

Travelers Protection Plan (TPP) for River Cruises

\$499 with cruise rate up to \$5,000

\$569 with cruise rate over \$5,001

This nonrefundable fee will provide a refund to you during the instance that you have to cancel your trip. The cancellation has to be for a covered reason (see Plan for details on coverage) and we have to be notified at least one day prior to departure. If you must leave the tour early due to personal illness or the illness or death of an immediate family member, TPP will provide a refund for any unused services after the departure of the tour. Other benefits include medical expenses for illness and injury, emergency transportation, 24 hour hot line and lost or stolen baggage assistance. Return air transportation is included ONLY if your air tickets are purchased through Mayflower Cruises & Tours. Please review the Plan for details on coverage. Should you choose not to purchase our TPP, the following per person cancellation charges will be assessed for all tours and optional excursion costs:

- 91 days or more prior to departure: Deposit Amount
- 90 days to day of departure: 100% of total tour
- No refund on unused portions of the tour

Exclusions: Mayflower Cruises & Tours reserves the right to alter its Refund and Cancellation Policy when a substantial amount of cancellation or postponement of travel is attributable to: conditions resulting from an act of God, natural or man-made disaster, fire, government action, civil disorder, war, hostilities between nations, or unavailability of transportation through no fault of Mayflower Cruises & Tours. *Plan and benefits offered and administered by Trip Mate, Inc.*

Free air is offered when booked by 12/31/23!

After free air expires, roundtrip air from Omaha will be \$1,650.

Call for further details.

Motorcoach transfers from Grand Island to Omaha Eppley Airfield included with a minimum of 25 passengers.

Air itineraries may not be available until documents are received. Air seats are assigned by the airline for the entire group. Seat changes can only be attempted upon receipt of tickets and documents at which time availability may be limited. If specific seat assignments are vital to your reservation, we recommend individual air reservations rather than booking air with the group.



FOR RESERVATIONS OR INFORMATION CONTACT:

Jeff Gannon
308-381-8785
 jeff@gannontravel.com

Gannon Travel
 2335 N Webb Road
 Grand Island, NE 68803