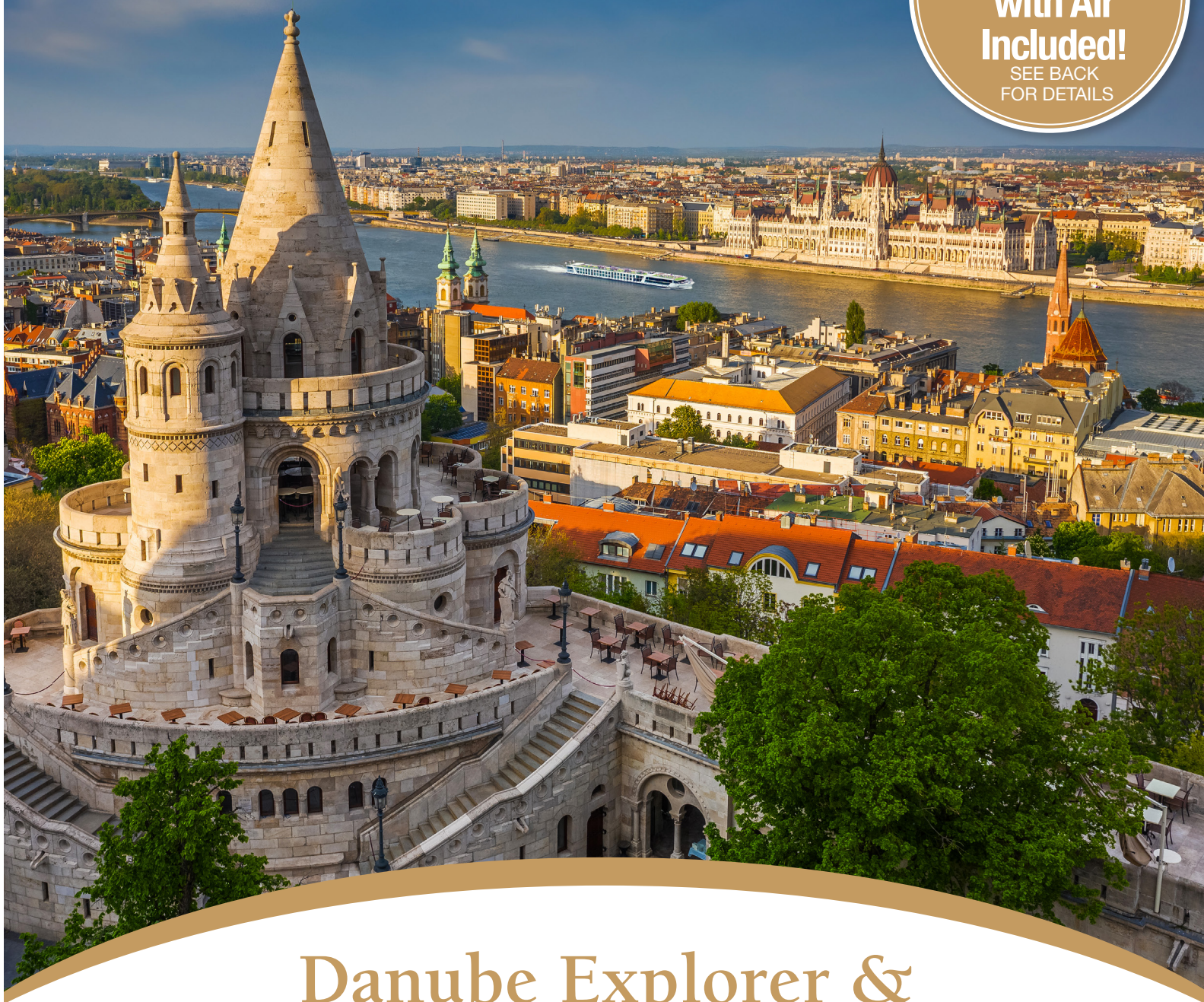




Special
Pricing
with Air
Included!

SEE BACK
FOR DETAILS



Danube Explorer & Highlights of Budapest

Hungary • Slovakia • Austria • Czech Republic • Germany

Departure Date: April 27, 2024



Danube Explorer & Highlights of Budapest



Vienna's Imperial Hofburg Palace



Visit the village of Weisenkirchen located in the Wachau Wine Region

DAY 1 Depart the USA: Depart the USA on your overnight flight to Budapest, Hungary.

DAY 2 Budapest, Hungary: Welcome to Budapest, the 'Pearl of the Danube', where you will be greeted by a representative of Mayflower / Emerald Cruises and transferred to your contemporary Star-Ship. Once on board, you receive a warm welcome from our friendly crew.
Meal: D

DAY 3 Budapest: Your journey starts in Budapest, where a fantastic trip and exciting experiences await. Explore the city's cobbled medieval quarter as you embark on a coach tour through the UNESCO World Heritage city center. Your guide will teach you about the Hungarian capital's culinary scene, finishing at the neo-Gothic Grand Market, Budapest's largest and most expansive indoor market, where you'll have time to explore on your own. If you are feeling more active, alternatively choose to hike up Buda Hill. The surrounding area has been rebuilt several times, most recently following the air raids of WWII. Some 18th-century Baroque houses still stand, best explored from the medieval paths and alleyways around Buda Castle. This evening, join your fellow guests for a traditional Hungarian folklore show. **Meals: B, L, D**

EmeraldPLUS: Traditional Hungarian folklore show onboard

EmeraldACTIVE: Hike to Buda Hill

DiscoverMORE: Hungarian Bath Experience (additional expense)

DAY 4 Budapest: The day is at leisure to pursue independent interests or join a DiscoverMORE excursion. This evening, we invite you to a special dinner and a traditional folklore show for a truly immersive local experience, presenting you with a great chance to get to know your fellow travellers and to spend the evening in town just like the locals do. **Meals: B, L, D**

EmeraldPLUS: Dinner & folklore show in Budapest

DiscoverMORE: Retro tour of post-Communist Budapest (additional expense)

DiscoverMORE: Jewish heritage tour (additional expense)

DiscoverMORE: Budapest by Night (additional expense)

DAY 5 Budapest: On the last morning in Budapest, enjoy a leisurely walk in town or use one of the onboard bikes for one last

ride through the Hungarian capital. In the afternoon, the ship sets sail on the magnificent Danube River for the next destination – Slovakia. **Meals: B, L, D**

DiscoverMORE: Excursion to Szentendre (additional expense)

DAY 6 Bratislava, Slovakia: This morning, the ship arrives in the Slovakian capital of Bratislava. The romantic cobblestone lanes weaving through the city are yours to explore. Enjoy guided walking tours of the ancient town center, passing a range of Gothic and Art Nouveau buildings, including the incredible Slovak National Theater. Alternatively, embark on a guided hike to Bratislava Castle, a fairy tale-like landmark steeped in legend. This striking building has been rebuilt several times, most recently in the mid-20th century. Tonight, enjoy some local Slovakian entertainment onboard. **Meals: B, L, D**

EmeraldACTIVE: Guided hike to Bratislava Castle

DiscoverMORE: Skoda tour of post-Communist Bratislava (additional expense)

EmeraldPLUS: Local Slovakian entertainment onboard

DAY 7 Vienna, Austria: Sweeping boulevards and world-famous exhibition halls welcome you to Vienna, the birthplace of revolutionary breakthroughs in the fields of music and psychology. The city perfectly encapsulates the extravagance of the Habsburg Monarchy and their ornate Baroque palaces. A walking tour of the UNESCO World Heritage city center uncovers the classical architectural styles of the city, evidence of the melting pot of artistic influences that existed here at the turn of the 20th century. If you are feeling more active, choose to explore on two wheels, cycling along the river to Donauinsel, Danube Island. **Meals: B, L, D**

EmeraldACTIVE: Guided bike tour in Vienna

DiscoverMORE: Exclusive Viennese evening concert (additional expense)

DAY 8 Weissenkirchen – Melk: Effortlessly suspended in time, Weissenkirchen is one of the most frequented parts of the Wachau wine region, where the delightful warm weather creates the perfect setting for viticulture. Join your Activity Manager for a hike in town before setting sail and cruising through the UNESCO World Heritage Wachau Valley en route to Melk. Upon arrival, enjoy a guided tour of Melk Abbey. Originally a lavish castle gifted to Benedictine monks during the 11th century, this opulent Baroque



Visit the UNESCO World Heritage center of Český Krumlov

building is home to some of the most important collections of medieval manuscripts. **Meals: B, L, D**

EmeraldACTIVE: Guided bike tour along the Danube River

EmeraldACTIVE: Hike in Weissenkirchen with activity manager

DiscoverMORE: Visit to Schallaburg Castle (additional expense)

DAY 9 Linz – Český Krumlov, Czech Republic: This morning, your Star-Ship will dock in Linz. Journey by coach across the border into the Czech Republic to the UNESCO World Heritage center of Český Krumlov, a town built around a 13th-century castle. Join your local guide on a walk along the labyrinth of winding cobblestone streets, passing the colorful façades of buildings, as you learn how the architecture survived the test of time. The town surrounds the UNESCO World Heritage Český Krumlov Castle, and your guided tour will include the 15th-century St. Vitus Church and a number of delightful Gothic façades. **Meals: B, D**

EmeraldPLUS: Guided tour of Český Krumlov

DiscoverMORE: Linzer torte making workshop (additional expense)

DAY 10 Passau, Germany: Narrow cobblestone streets welcome you to Passau, a town nestled on the confluence of three of Europe’s main waterways. This historic trading center borders Austria and boasts a distinctive blend of cultures. Experience a typical Bavarian farm for some interesting insights into the life of local farmers and livestock farming, then try their homemade specialities. Alternatively, you can set off on a hike, catching sights such as the Mariahilf and St. Severin, an ancient church dating back to the Ottonian dynasty. **Meals: B, L, D**

EmeraldACTIVE: Hike to Veste Oberhaus

EmeraldPLUS: Bavarian brunch

DiscoverMORE: Bavaria Live (additional expense)

DAY 11 Passau / USA: After breakfast, it’s time to disembark the Star-Ship for your transfer to the airport, taking memories of Europe’s iconic skylines and charming small towns along the Danube River with you. **Meal: B**

Itinerary is subject to change.



Exceptional Inclusions

- **25 Meals:** 9 breakfasts, 7 lunches, and 9 dinners
- **Airport transfers** on tour dates when air is provided by Mayflower Cruises & Tours
- Visit **five countries**
- **Nine-night cruise in a suite or stateroom** of your choice onboard the vessel
- **All gratuities included**
- **First-class service** by an English-speaking crew
- **Onboard Activity Manager** will support all EmeraldACTIVE excursions and host daily onboard wellness activities, games, classes and evening entertainment
- **Shore excursions** with English-speaking local guides
- Personal **listening device** for onboard excursions
- Most meals included onboard with a **variety of international cuisine**
- Complimentary **regional wines, beer and soft drinks** accompany onboard lunches and dinners
- Complimentary **bottled water** in your stateroom
- Complimentary **WiFi onboard**
- Complimentary **bicycles onboard** for use ashore
- **All port charges included**

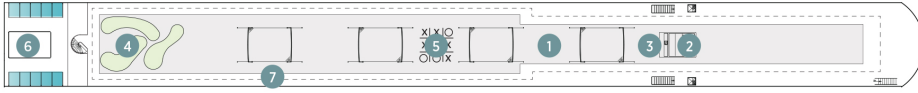
CRUISE ACCOMMODATIONS

Days 2 through 10 – Aboard an Emerald Cruises Star-Ship
Pre-cruise hotel stays available in Budapest. Call for details.

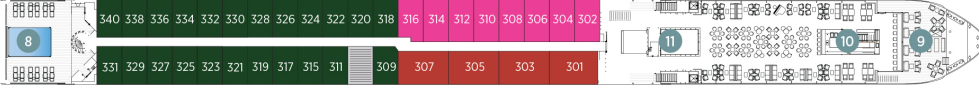
Emerald Cruises Star-Ships

Built: 2014-20 **Speed:** 15.5 mph **Staterooms:** 19 **Suites:** 72 **Length:** 443 ft. **Crew:** 47

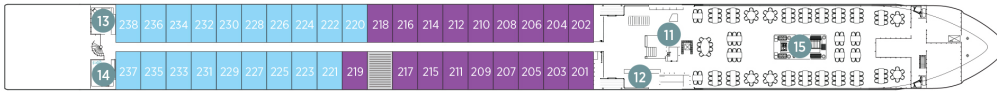
SUN DECK



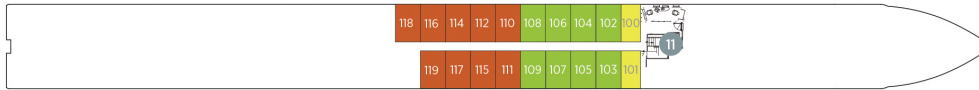
HORIZON DECK



VISTA DECK

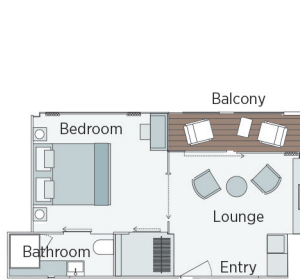


RIVIERA DECK



Public Areas and Ship Amenities

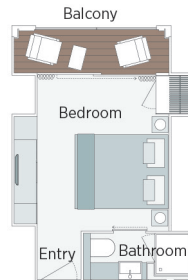
- 1 Sun Deck with Deck Chairs
- 2 Navigation Bridge
- 3 Sky Barbeque
- 4 Golf Putting Green
- 5 Games Area
- 6 Retractable Glass Roof
- 7 Walking Track
- 8 Daytime Pool / Evening Cinema
- 9 The Terrace
- 10 Horizon Bar and Lounge
- 11 Elevator
- 12 Reception
- 13 Wellness Area
- 14 Fitness Area
- 15 Reflections Restaurant



Owner's One-Bedroom Suite

315ft²

CAT SA



Grand Balcony Suite

210ft²

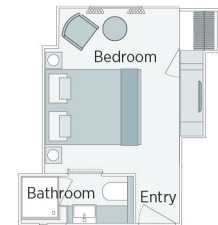
CAT S



Panorama Balcony Suite

180ft²

CAT A CAT B CAT C



Emerald Stateroom

162ft²

CAT D CAT E

Danube Explorer & Highlights of Budapest

		APRIL 27, 2024			
CAT	STATEROOM / SUITE	DECK	PER PERSON TWIN		SINGLE ROOM ADD
			FULL FARE	SPECIAL FARE	
E	Emerald Stateroom	Riviera	\$4495	\$3,596	+\$3,496
D	Emerald Stateroom	Riviera	\$4945	\$3,946	+\$3,846
C	Panorama Balcony Suite	Vista	\$5795	\$4,607	+\$4,507
B	Panorama Balcony Suite	Vista	\$5995	\$4,763	+\$4,663
A	Panorama Balcony Suite	Horizon	\$6195	\$4,918	+\$4,818
S	Grand Balcony Suite	Horizon	\$7145	\$5,657	N/A
SA	Owner's One-Bedroom Suite	Horizon	\$8295	\$6,552	N/A

*Special Fares valid when booked by December 31, 2023.

These fares included roundtrip air from Jackson, MS and roundtrip airport transfers from Meridian.

(Call for rates after January 1st, 2024)

Air itineraries may not be available until documents are received. Air seats are assigned by the airline for the entire group. Seat changes can only be attempted upon receipt of tickets and documents at which time availability may be limited. If specific seat assignments are vital to your reservation, we recommend individual air reservations rather than booking air with the group.



Travelers Protection Plan (TPP) for River Cruises

Category A - E = \$499 per person
Category S & SA = \$569 per person

This nonrefundable fee will provide a refund to you during the instance that you have to cancel your trip. The cancellation has to be for a covered reason (see Plan for details on coverage) and we have to be notified at least one day prior to departure. If you must leave the tour early due to personal illness or the illness or death of an immediate family member, TPP will provide a refund for any unused services after the departure of the tour. Other benefits include medical expenses for illness and injury, emergency transportation, 24 hour hot line and lost or stolen baggage assistance. Return air transportation is included ONLY if your air tickets are purchased through Mayflower Cruises & Tours. Please review the Plan for details on coverage. Should you choose not to purchase our TPP, the following per person cancellation charges will be assessed for all tours and optional excursion costs:

- 91 days or more prior to departure: Deposit Amount
- 90 days to day of departure: 100% of total tour
- No refund on unused portions of the tour

Exclusions: Mayflower Cruises & Tours reserves the right to alter its Refund and Cancellation Policy when a substantial amount of cancellation or postponement of travel is attributable to: conditions resulting from an act of God, natural or man-made disaster, fire, government action, civil disorder, war, hostilities between nations, or unavailability of transportation through no fault of Mayflower Cruises & Tours. Plan and benefits offered and administered by Trip Mate, Inc.



FOR RESERVATIONS OR INFORMATION CONTACT:

**Susie Broadhead
Community Bank
601-286-5613**

susie.broadhead@communitybank.net