



**FREE
AIRFARE**

CALL FOR DETAILS

Jewels of the Rhine

the Netherlands • Germany • France

Tour Dates: October 2 -12, 2026



Jewels of the Rhine



The magnificent Duomo soars skyward in Cologne, Germany



Heidelberg, Germany

DAY 1 Depart the USA: Depart the USA on your overnight flight to Amsterdam, the Netherlands.

DAY 2 Amsterdam, the Netherlands: Welcome to Amsterdam, a fascinating 700-year-old city of picturesque canals, world class museums, and cafés. You will be met and transferred from the airport to your hotel. The remainder of the day is at your leisure to begin your independent exploration of Amsterdam.

DAY 3 Amsterdam, the Netherlands: After checking out of the hotel this morning, transfer to your luxurious Emerald Cruises Star-Ship. Become acquainted with the amenities of your ship or begin exploring the city. This evening, join your fellow travelers for dinner onboard. **Meals: B, D**

DAY 4 Amsterdam: This morning, discover the charm of Alkmaar, a picturesque Dutch town just a short distance from Amsterdam. Explore its historic center, lined with charming canals and medieval buildings. Alkmaar is famous for its centuries-old cheese market where traditional cheesemakers showcase their craft and engage in lively auctions. Immerse yourself in the local culture in this typical charming town. Alternatively, embark on a bike tour through the Dutch countryside. In the afternoon enjoy sailing on the Rhine River, perhaps grab a drink on the Sun Deck and watching the passing scenery before joining the welcome dinner. **Meals: B, L, D**

EmeraldACTIVE: Guided bike tour to Waterland

DiscoverMORE: Dutch Delights (additional expense)

DAY 5 Dusseldorf – Cologne: Join a walking tour of Düsseldorf, a vibrant city renowned for its stylish boutiques and charming Old Town. Stroll along the picturesque Rhine River, admire the stunning architecture, and discover hidden gems off the beaten path. Later this day we will arrive in Cologne, famous for its Gothic Cathedral. This afternoon you can immerse yourself in the city's lively atmosphere, indulge in delicious local cuisine, and experience the unique charm of the city. **Meals: B, L, D**

DiscoverMORE: Cologne beer experience (extra expense)

DAY 6 Koblenz: Cruise to the 2000-year-old town of Koblenz, situated at the confluence of the Rhine and Moselle Rivers. Enjoy a walking tour of Koblenz seeing the German Corner where the 2 rivers meet and the Church of Our Lady. This afternoon, sail through the spectacular UNESCO World Heritage Rhine Gorge. Pass countless medieval castles and vineyards lining the shores of this section of the river, with photo opportunities around every bend. See the infamous Lorelei statue and Pfalzgrafenstein Castle, built on an island in the middle of the river as a medieval toll station. **Meals: B, L, D**

DiscoverMORE: Moselle & Cochem (Reichsburg) Castle Visit (additional expense)

NOTE: You can choose either the included tour of Koblenz OR the DiscoverMORE option, as both tours operate at the same time

DAY 7 Germersheim / Heidelberg: Continue sailing to the town of Germersheim, docking site for Heidelberg. Travel by coach to Heidelberg for a guided visit of the castle ruins and a walk along the cobblestone lanes of the old town. This evening, attend a private concert as an EmeraldPLUS activity.

Meals: B, L, D

EmeraldACTIVE: Hike from Mount Königstuhl to Heidelberg

EmeraldPLUS: Private Evening Concert Performance

DAY 8 Strasbourg, France: Travel by coach across the river to Strasbourg, the capital of the Alsace region in France. Your guided walking tour includes the Grande Île - the historical city center and UNESCO World Heritage Site. Known for its medieval black and white timber-framed buildings, old tanning houses, baroque sandstone buildings, canals and river locks, the city's star attraction is the cathedral, dominating the main square. Enjoy free time this afternoon to continue exploring this charming town on your own. Tonight, local entertainment is provided onboard. **Meals: B, L, D**

DiscoverMORE: Baden Baden Spa experience (extra expense)

DAY 9 Breisach, Germany / Freiburg: On today's adventure, visit the city of Freiburg, considered the 'capital of the Black Forest'. Aside from seeing the lovely sights, sample true Black Forest delicacies from the lively market in the city center near the main cathedral. Alternatively, join a guided bike tour in Breisach. **Meals: B, L, D**

EmeraldPLUS: Guided tour of Freiburg

EmeraldACTIVE: Guided bike tour in Breisach

DiscoverMORE: Guided tour of Colmar (additional expense)

DAY 10 Huningue, France – Zurich, Switzerland: After breakfast, disembark the ship in Huningue and transfer for Zurich for your last night of your European adventure. After checking into the hotel, the remainder of the day is at your leisure to begin your independent exploration of Zurich. **Meal: B**

DAY 11 Zurich / USA: Bid 'auf wiedersehen' to Europe and return home with memories of life enriching experiences from your European adventure and cruise along the Rhine River. **Meal: B**

Itinerary and excursions are subject to change.

CRUISE AND HOTEL ACCOMMODATIONS

Day 2 – DoubleTree Hilton Centraal Station, Amsterdam

Days 3 through 9 – Aboard an Emerald Cruises Star-Ship

Day 10 – Hotel Krone, Unterstrass Zurich



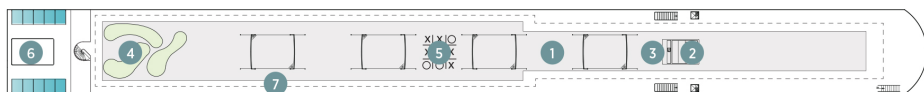
Exceptional Inclusions

- **22 Meals:** 9 breakfasts, 6 lunches and 7 dinners
- **Airport transfers** on tour dates when air is provided by Mayflower Cruises & Tours
- **Seven-nights in a suite or stateroom** of your choice onboard the vessel
- **First-class service** by an English-speaking crew
- **Onboard Activity Manager** will support all EmeraldACTIVE excursions and host daily onboard wellness activities, games, classes and evening entertainment
- **All gratuities included**
- **Shore excursions** with English-speaking local guides
- Visit **UNESCO World Heritage Sites**
- Personal **listening device** for shore excursions
- **All meals included** onboard
- Variety of **international cuisine**
- Complimentary **regional wines, beer and soft drinks** with onboard lunches and dinners
- Complimentary **bottled water** in your stateroom
- Complimentary **WiFi onboard**
- Complimentary **bicycles onboard** for use ashore
- **All port charges included**

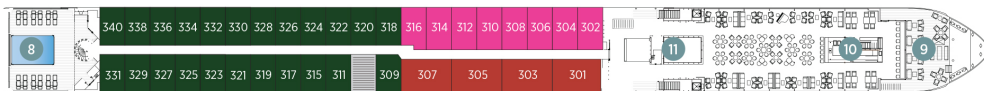
Emerald Cruises Star-Ships

Built: 2014-2026 **Speed:** 15.5 mph **Staterooms:** 19 **Suites:** 72 **Length:** 443 ft. **Crew:** 47

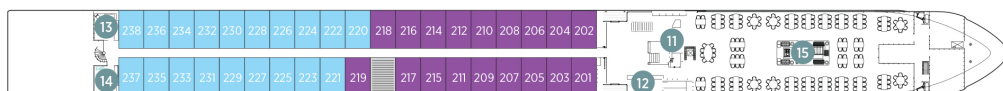
SUN DECK



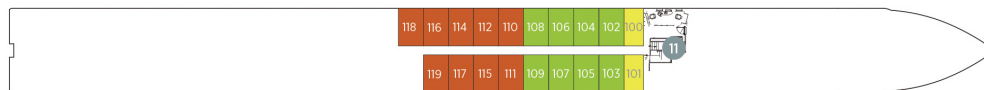
HORIZON DECK



VISTA DECK

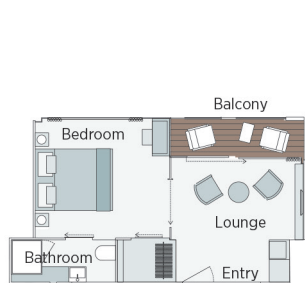


RIVIERA DECK



Public Areas and Ship Amenities

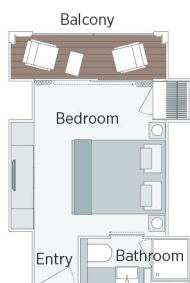
- 1 Sun Deck with Deck Chairs
- 2 Navigation Bridge
- 3 Sky Barbeque
- 4 Golf Putting Green
- 5 Games Area
- 6 Retractable Glass Roof
- 7 Walking Track
- 8 Daytime Pool / Evening Cinema
- 9 The Terrace
- 10 Horizon Bar and Lounge
- 11 Elevator
- 12 Reception
- 13 Wellness Area
- 14 Fitness Area
- 15 Reflections Restaurant



Owner's One-Bedroom Suite

315ft²

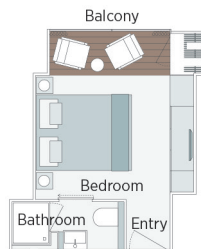
CAT SA



Grand Balcony Suite

210ft²

CAT S



Panorama Balcony Suite

180ft²

CAT A CAT B CAT C



Emerald Stateroom

162ft²

CAT D CAT E

Jewels of the Rhine

| | | Oct 2 -12, 2026 | |
|-----------|---------------------------|-----------------|---------|
| CAT | STATEROOM / SUITE | DECK | |
| B | Panorama Balcony Suite | Vista | \$5,965 |
| A | Panorama Balcony Suite | Horizon | \$6,115 |
| S | Grand Balcony Suite | Horizon | \$7,115 |
| SA | Owner's One-Bedroom Suite | Horizon | \$8,215 |

Air itineraries may not be available until documents are received. Air seats are assigned by the airline for the entire group and may not be available until airport check-in. Seat changes can only be attempted at the airport and may not be possible. If specific seat assignments are vital to your reservation, we recommend booking air on your own rather than booking air with the group.

Travelers Protection Plan (TPP) for River Cruises - \$569 per person

This nonrefundable fee will provide a refund to you during the instance that you have to cancel your trip. The cancellation has to be for a covered reason (see Plan for details on coverage) and we have to be notified at least one day prior to departure. If you must leave the tour early due to personal illness or the illness or death of an immediate family member, TPP will provide a refund for any unused services after the departure of the tour. Other benefits include medical expenses for illness and injury, emergency transportation, 24 hour hot line and lost or stolen baggage assistance. Return air transportation is included ONLY if your air tickets are purchased through Mayflower Cruises & Tours. Please review the Plan for details on coverage. Should you choose not to purchase our TPP, the following per person cancellation charges will be assessed for all tours and optional excursion costs:

- 91 days or more prior to departure: Deposit Amount
- 90 days to day of departure: 100% of total tour
- No refund on unused portions of the tour



Exclusions: Mayflower Cruises & Tours reserves the right to alter its Refund and Cancellation Policy when a substantial amount of cancellation or postponement of travel is attributable to: conditions resulting from an act of God, natural or man-made disaster, fire, government action, civil disorder, war, hostilities between nations, or unavailability of transportation through no fault of Mayflower Cruises & Tours. Plan and benefits offered and administered by Trip Mate, Inc.

Pricing includes Land/Cruise plus one night in Amsterdam and one night in Zurich.

FREE AIR when booked within promotion!

Deposit: \$400 per person

Pre Night Hotel:

DoubleTree Hilton Central Station
Twin/Double: \$220 per person per night
 Inclusive of taxes, transfers, and breakfast

Post Night Hotel:

Hotel Krone Unterstrass Zurich
Twin/Double: \$200 per person per night
 Inclusive of taxes, transfers, and breakfast

FOR RESERVATIONS OR INFORMATION CONTACT:



Laurie Peklo
248-656-3500
travelshamrock@gmail.com