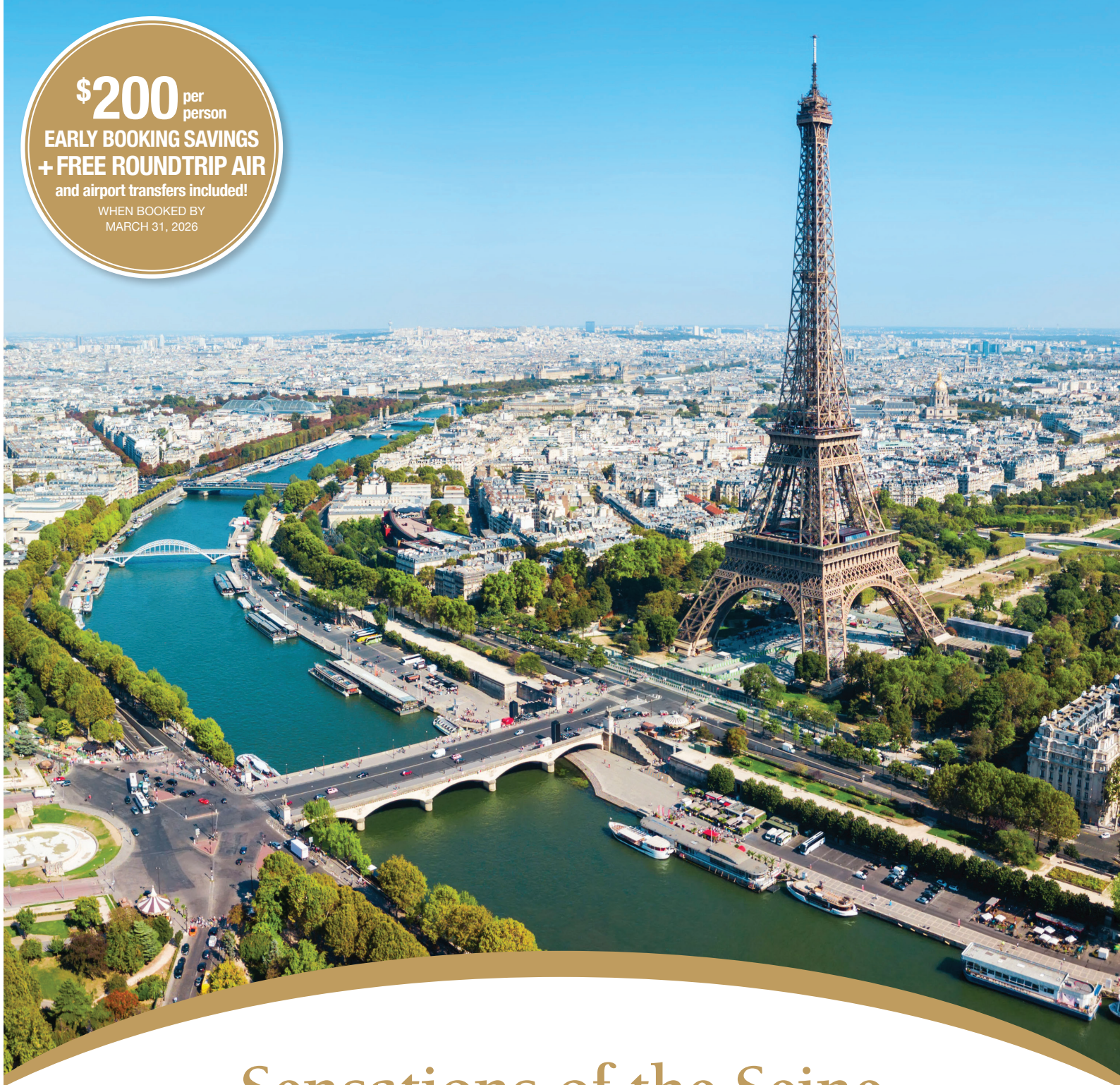


\$200 per person

**EARLY BOOKING SAVINGS
+ FREE ROUNDTRIP AIR**
and airport transfers included!

WHEN BOOKED BY
MARCH 31, 2026



Sensations of the Seine & Normandy with Paris

Departure Date: May 19, 2027



Sensations of the Seine & Normandy with Paris



DAY 1 Depart the USA: Depart the USA on your overnight flight to Paris, France.

DAY 2 Paris, France: Welcome to Paris, the enchanting capital of France where your journey will begin. Upon arrival, you will be met by a representative of Mayflower Cruises & Tours and assisted with the transfer to your hotel. The day is free to begin exploring on your own or simply relax.

DAY 3 Paris: After breakfast, enjoy an included panoramic tour of this capital city. See such famous sites and landmarks as the Louvre, Opéra Garnier, Place Vendôme, the trendy district of Le Marais on the Right Bank, Place de la Concorde, Champs-Élysées, Arc de Triomphe, Place de la Bastille, the Trocadéro and the pièce de résistance...the Eiffel Tower. After your orientation to the city, the remainder of the day is at your leisure to pursue independent interests. **Meal: B**

Included Excursion: Paris Orientation Tour

DAY 4 Embark the MS Emerald Lumi: In the early afternoon, depart the hotel and embark the *MS Emerald Lumi*, home for the next seven nights. Enjoy an afternoon at leisure to unpack, discover the amenities on board or take a leisurely stroll along the Seine. This evening, join your fellow guests for a welcome dinner on board. Later, your ship will depart Paris and cruise to Vernon during the night. **Meals: B, D**

DAY 5 Vernon: Today, you'll visit Giverny, a picturesque village near Vernon on the banks of the Seine, where celebrated impressionist artist, Claude Monet, lived for over forty years. Experience an early morning tour of Giverny Gardens, Monet's former home until his death in 1926. Explore Monet's beautifully preserved house. Walk through the rooms where he lived and worked and the restored, elaborate gardens, which inspired some of his most iconic works, including the beloved Water Lilies series. As you stroll through the colorful flower garden and Japanese-inspired water garden – showcasing the famous Japanese Bridge and lily ponds – you'll get a sense of the extraordinary play of color and light on nature and how this translated to Monet's distinctive Impressionist art. **Meals: B, L, D**

Included Excursion: In the Footsteps of Claude Monet

DAY 6 Rouen: Welcome to Rouen, a beautiful city set along the banks of the Seine and steeped in history and heritage, from Vikings and saints to renowned artists. In the morning, join a guided walk through Rouen's medieval centre. Learn how this former Roman settlement emerged as a major stronghold of Viking invaders during the 9th century. Hear fascinating tales about Rollo, the Viking chieftain proclaimed the first Duke of Normandy and how his legacy helped shape not only this region, but the course of European history. Rouen is also forever linked with legendary figure, Joan of Arc, as it was here, in 1431, that this young French heroine was tried and burnt at the stake. Today, enjoy a guided walking tour visiting key sites connected to this martyr's final days and learn how Rouen honors the legacy of Saint Joan of Arc. Rouen is also famed for its Gothic Notre-Dame Cathedral, the tallest in France, whose stunning façade was immortalized multiple times by Monet. Later, on board your Star-Ship, gain deeper insight into history with a World War II lecture that sets the stage for your visit to the legendary D-Day beaches the following day. **Meals: B, L, D**

Included Excursion: Walking Tour of Rouen

DAY 7 Honfleur: The success of the historical 'D-Day' was a turning point in World War II, opening a crucial Western front and accelerating the defeat of Nazi Germany. Normandy's role in this extraordinary military operation makes it one of the most important regions in World War II history. Remembered today for its strategic importance, Normandy was a turning point in the war and the beginnings of liberation for occupied Europe. Today, you'll join a remarkable full-day experience and war-themed tour, focused on this highly significant time in World War II. Visit the key sites of the historical D-Day landings by the Allied forces and subsequent battles – one of Normandy's major highlights. Experience first-hand the Normandy beaches where the Allied vessels landed, as well as the memorials and museum, which honor the bravery of those involved and their ultimate sacrifice. Your Star-Ship remains docked in Honfleur overnight. **Meals: B, L, D**

Included Excursion: Historic Normandy: Allied Landing Sites

DAY 8 Honfleur: Enjoy a leisurely day discovering Honfleur, a popular harbor town best known for its picturesque old port and well-preserved, timber-framed houses.



Enjoy a remarkable full-day tour of Normandy

Your morning walking tour presents a fascinating snapshot of Honfleur's unique character and Normandy seaside charm. Stroll around the bustling quay, enjoying the delightful views of colorful fishing boats, scenes that inspired the Impressionist artists. Explore the town's quaint streets and admire the striking St. Catherine Church, the largest wooden church in France rebuilt entirely of wood from the nearby forest. As Honfleur is also renowned for its premium fresh seafood, your tour includes a fresh oyster tasting – savouring authentic local flavours. **Meals: B, L, D**
Included Excursion: Walking Tour of Honfleur with Oyster Tasting

DAY 9 Les Andelys: While enjoying a serene cruise along the River Seine, take part in an exclusive EmeraldPLUS cheese tasting on board your Star-Ship. As you take in the bucolic riverine views, relish the delicious, rich, and authentic flavours that are connected to the timeless rural lands and traditions of Normandy. In the afternoon, discover the heart of Normandy's countryside with a visit to a traditional cider farm – another EmeraldPLUS experience. Here, you'll learn how the region's crisp, refreshing cider is crafted from locally-grown apples using age-old methods. Afterwards, enjoy a tasting of authentic local products that celebrate the renowned flavors of Normandy. **Meals: B, L, D**
EmeraldPLUS: Cheese tasting onboard
EmeraldPLUS: Exclusive local cider farm visit with tasting

DAY 10 La Roche Guyon: With your Star-Ship docked in La Roche Guyon today, you're in close walking distance to Château de La Roche-Guyon, a beautifully preserved estate steeped in centuries of history. Enjoy a morning tour to immerse yourself in the rich history and serene beauty of this riverside gem. Château de La Roche-Guyon served as a strategic stronghold during the Anglo-French Hundred Years' War and evolved as a favorite country retreat for Normandy's nobility. Originally built as a fortified castle in the 14th century and rebuilt in the 15th century, the Château majestically stands as a testament to French architectural heritage. Wander along tranquil pathways through the meticulously maintained gardens. Within the Château, discover elegant period rooms adorned with antique furnishings and artwork – offering a rare glimpse into the refined lifestyle of past centuries. **Meals: B, L, D**
Included Excursion: Visit to Château Guyon & Gardens



Exceptional Inclusions

- **22 Meals:** 9 breakfasts, 6 lunches, and 7 dinners
- Two-night **hotel stay in Paris** with touring included
- **Seven-nights in a suite or stateroom** of your choice onboard the *MS Emerald Lumi*
- **Six Included Excursions** with knowledgeable local guides
- Complimentary **regional wines, beer and soft drinks** with onboard lunches and dinners
- Complimentary **tea and coffee**
- Complimentary **bottled water** in your suite or stateroom, restocked daily
- A variety of **onboard evening entertainment**
- Complimentary **WiFi onboard**
- Complimentary **bicycles onboard** for use ashore
- **First-class service** from an English-speaking crew and knowledgeable local guides.
- All port charges, airport taxes and transfers within Europe included
- **All tips included**

DAY 11 Paris: Today, after breakfast, it's time to bid 'au revoir' to France, leaving with memories of wonderful experiences onboard the *MS Emerald Lumi* along the Seine River. **Meal: B**

Itinerary and excursions are subject to change.
 Additional excursions will be released approximately 180 days prior to departure.

CRUISE AND HOTEL ACCOMMODATIONS

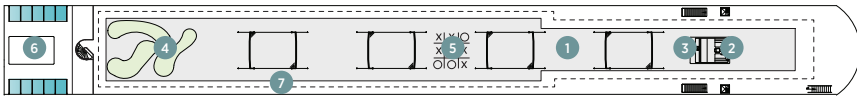
Days 2 and 3 – Crowne Plaza Republique, or similar, Paris, France

Days 4 through 10 – Onboard the *MS Emerald Lumi*

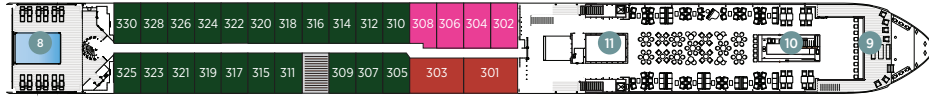
MS Emerald Lumi

Built: 2027 Speed: 15.5 mph Cabins: 66 Length: 361 ft. Crew: 48

SUN DECK



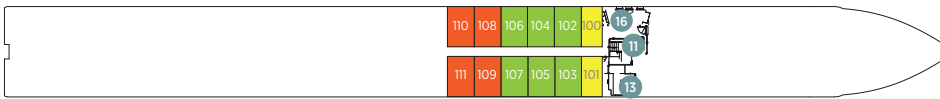
HORIZON DECK



VISTA DECK

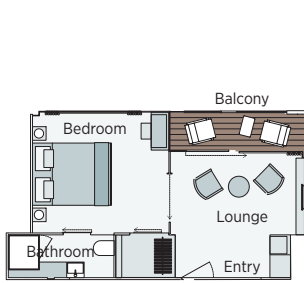


RIVIERA DECK



Public Areas and Ship Amenities

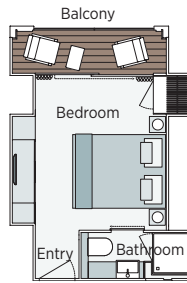
- 1 Sun Deck with Deck Chairs
- 2 Navigation Bridge
- 3 Sky Barbecue
- 4 Golf Putting Green
- 5 Games Area
- 6 Retractable Glass Roof
- 7 Walking Track
- 8 Daytime Pool & Bar/Evening Cinema
- 9 The Terrace
- 10 Horizon Bar & Lounge
- 11 Lift
- 12 Reception
- 13 Wellness Area
- 14 Fitness Area
- 15 Reflections Restaurant
- 16 Guest Laundry



Owner's One-Bedroom Suite

315ft²

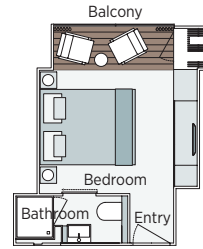
CAT SA



Grand Balcony Suite

207ft²

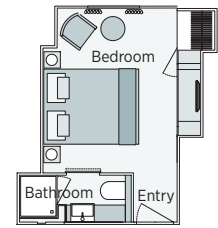
CAT S



Panorama Balcony Suite

170ft²

CAT A CAT B CAT C



Emerald Stateroom

170ft²

CAT D CAT E

Sensations of the Seine & Normandy with Paris

		MAY 19, 2027	
CAT	STATEROOM / SUITE	DECK	
E	Emerald Stateroom	Riviera	\$5,995 + \$4,478
D	Emerald Stateroom	Riviera	\$5,995 + \$4,478
C	Panorama Balcony Suite	Vista	\$6,770 + \$5,040
B	Panorama Balcony Suite	Vista	\$6,770 + \$5,040
A	Panorama Balcony Suite	Horizon	\$6,995 + \$5,209
S	Grand Balcony Suite	Horizon	\$8,345 N/A
SA	Owner's One-Bedroom Suite	Horizon	\$8,895 N/A

Prices include Free Roundtrip Air from ATL and Roundtrip Airport Transfers (from designated pick-up locations), when booked by March 31st, 2026. (call for air rates after March 31st)

Air schedules between your city and Paris, France will be available closer to departure.

Air itineraries may not be available until documents are received. Air seats are assigned by the airline for the entire group and may not be available until airport check-in. Seat changes can only be attempted at the airport and may not be possible. If specific seat assignments are vital to your reservation, we recommend booking air on your own rather than booking air with the group.

Travelers Protection Plan (TPP) for River Cruises - \$569 per person

This nonrefundable fee will provide a refund to you during the instance that you have to cancel your trip. The cancellation has to be for a covered reason (see Plan for details on coverage) and we have to be notified at least one day prior to departure. If you must leave the tour early due to personal illness or the illness or death of an immediate family member, TPP will provide a refund for any unused services after the departure of the tour. Other benefits include medical expenses for illness and injury, emergency transportation, 24 hour hot line and lost or stolen baggage assistance. Return air transportation is included ONLY if your air tickets are purchased through Mayflower Cruises & Tours. Please review the Plan for details on coverage. Should you choose not to purchase our TPP, the following per person cancellation charges will be assessed for all tours and optional excursion costs:

- 121 days or more prior to departure: Deposit Amount
- 120 days to day of departure: 100% of total tour
- No refund on unused portions of the tour

TOUR ACTIVITY LEVEL



Exclusions: Mayflower Cruises & Tours reserves the right to alter its Refund and Cancellation Policy when a substantial amount of cancellation or postponement of travel is attributable to: conditions resulting from an act of God, natural or man-made disaster, fire, government action, civil disorder, war, hostilities between nations, or unavailability of transportation through no fault of Mayflower Cruises & Tours. Plan and benefits offered and administered by Trip Mate, Inc.

FOR RESERVATIONS OR INFORMATION CONTACT:

770-851-5563

Jacque@AgelessAdventures.net

www.agelessadventures.net

