



FREE AIR
+ \$200 OFF CABIN PRICE
WHEN YOU BOOK/DEPOSIT BY MAR 31, 2026

11 DAYS • 22 MEALS • LISBON > PORTO

PORTUGAL AND THE DOURO RIVER CRUISE

2027 Departure Date: August 18th

A symbol of Portugal's growth, the Douro River has long been the nation's lifeline. Spend two nights in Lisbon, exploring the city's iconic sights. On the way to Porto, visit Fátima and Coimbra. Cruise through Portugal's enchanting countryside along the dramatic Douro. Terraced vineyards line the banks, historic landmarks dot the hills, and charming towns await discovery. From Spain's walled Salamanca to Portugal's baroque Lamego, experience a fresh perspective of Europe as you journey along one of its most scenic rivers.

HORIZONS CLUB |  **First State
Community Bank**



DAY 1 Depart the USA

Depart the USA on your overnight flight to Lisbon, Portugal.

DAY 2 Lisbon, Portugal

Upon arrival, you'll be met by a representative of Mayflower Cruises & Tours and transferred to your hotel. The remainder of the day is at your leisure to explore Lisbon. This evening, join your Mayflower staff and fellow travelers for an included dinner. *Meal: D*

DAY 3 Lisbon

After breakfast, an included tour highlights the famous sites of the city. During a panoramic coach tour, see 'Monument to the Discoveries,' and Belem Tower, a UNESCO World Heritage Site. Visit Jerónimos Monastery and discover the unique architecture and history. Enjoy a free afternoon to shop, dine and experience this cosmopolitan city on your own. *Meal: B*



DAY 4 Fátima - Coimbra - Porto

Depart Lisbon by coach and journey to the ship in Porto. Enroute, visit Fátima, home to the Sanctuary of Fátima, an important Catholic pilgrimage site. The city's fame originates from the apparitions of Our Lady of the Rosary that appeared to three shepherd children in the nearby fields. Continue to Coimbra and its famous university before arriving in Porto to embark the MS Emerald Radiance, home for the next seven nights. *Meals: B, D*

DAY 5 Porto - Pinhão

Today is a day of sailing through the twists and turns of the Douro Valley. Designated a UNESCO World Heritage Site, this area is sparsely populated by quaint villages, sun-drenched vineyards and small farms. Later today, arrive in the village of Pinhão, perfectly situated on a river bend surrounded by terraced hillsides that produce some of the world's best Port wine. Tonight, enjoy a welcome reception and dinner. *Meals: B, L, D*

DAY 6 Pinhão - Vega de Terrón

Begin the day with a visit to the beautiful 18th-century estate of Quinta do Tedo Vineyard with spectacular views of the Douro Valley. Learn about wine production, its importance to the culture and economy, and enjoy a tasting of the local vintage. This afternoon, the ship sails for Vega de Terrón, gateway to Spain. *Meals: B, L, D*

DAY 7 Salamanca, Spain

Today's excursion takes you to the UNESCO World Heritage Site of Salamanca, Spain. During the guided walking tour, see amazingly detailed and intricately carved buildings of the university and the House of Shells. Regal splendor abounds in the Plaza Mayor, the heartbeat of the city. You'll have free time for lunch and to explore independently before returning to the ship in Portugal. *Meals: B, D*

DAY 8 Pocinho / Régua, Portugal

An early afternoon arrival brings you to Pocinho. Disembark for an included visit to the medieval town of Castelo Rodrigo. Uncover the secrets of its fortress and perhaps try some typical local products.



Sanctuary of Our Lady of Remedies, Lamego

Return to the ship for lunch and relax on deck as the ship sails through idyllic surroundings on the way to Régua. **Meals: B, L, D**

DAY 9 Régua – Lamego

From Régua, journey by coach to the marvelous baroque village of Lamego, home to the Sanctuary of Our Lady of Remedies - one of the most important pilgrimage sites in Portugal. Visit the Sanctuary perched atop the hill, with its iconic 686-step granite staircase, decorated with the traditional Portuguese blue and white ‘azulejos’ tiles. This afternoon, experience a rural lunch at Quinta da Pacheca, one of the finest estates along the Douro River. Return to the ship in Régua after the excursion. This evening, enjoy local entertainment onboard. **Meals: B, L, D**

DAY 10 Porto

Having traversed the Douro River, the ship returns to Porto – a city with an eclectic mix of modern and ancient architecture. An included tour highlights the sights from its scenic beauty to the historic landmarks of the Castelo da Foz and Castelo do Queijo. For those who wish to see the charms of Porto on foot, the Active walk through the town will bring you closer to the vibrant daily life of the locals. The remainder of the afternoon is at leisure in Porto. **Meals: B, L, D**

DAY 11 Porto / USA

This morning, disembark the MS Emerald Radiance and bid a fond farewell to Portugal, filled with memories of this remarkable cruise along the ‘River of Gold.’ **Meal: B**

Itinerary and excursions are subject to change.

Additional excursions will be released approximately 180 days prior to departure.

CRUISE AND HOTEL ACCOMMODATIONS

Days 2 and 3 – Sheraton, Lisbon, Portugal

Days 4 through 10 – Aboard the MS Emerald Radiance



EXCEPTIONAL INCLUSIONS

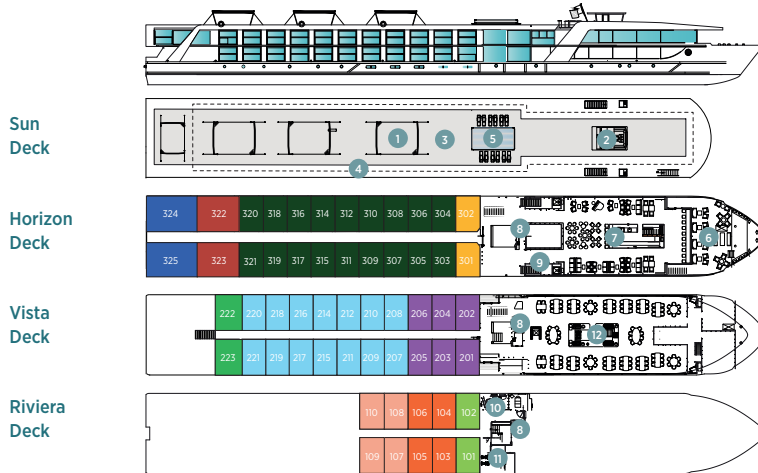
- 22 Meals: 9 breakfasts, 5 lunches and 8 dinners
- Airport transfers on tour dates when air is provided by Mayflower Cruises & Tours
- Visit two countries
- Two-night hotel stay and touring in Lisbon, Portugal before cruising
- Seven-night cruise on the Emerald Radiance
- First-class service by an English-speaking crew
- Onboard Activity Manager will support all EmeraldACTIVE excursions and host daily onboard wellness activities, games, classes and evening entertainment
- Shore excursions with English-speaking local guides
- All gratuities included
- Personal listening device for onboard excursions
- Many meals included onboard with a variety of international cuisine
- Complimentary regional wines, beer and soft drinks accompany onboard lunches and dinners
- Complimentary bottled water in your stateroom
- Complimentary WiFi onboard
- Variety of onboard evening entertainment



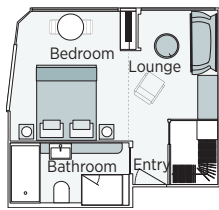
Porto, Portugal

EMERALD RADIANCE

Built: 2017 Cabins: 56 Guests: 112 Suites: 56 Length: 292 ft. Crew: 37



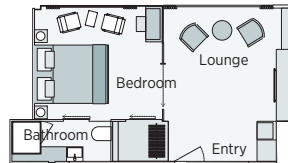
- 1 Sun Deck with Deck Chairs*
- 2 Navigation Bridge
- 3 Sky Barbecue
- 4 Walking Track
- 5 Spa-style Serenity Pool
- 6 The Terrace
- 7 Horizon Bar & Lounge
- 8 Lift
- 9 Reception
- 10 Wellness Area
- 11 Fitness Area
- 12 Reflections Restaurant



Emerald Riverview Suite

300ft²

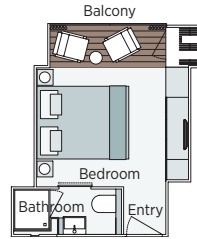
CAT RA



Owner's One-Bedroom Suite

285ft²

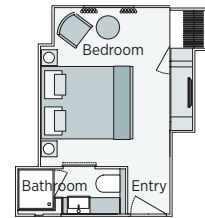
CAT SA



Emerald Panorama Balcony Suite

160ft² – 188ft²

CAT P CAT A CAT R CAT B CAT C



Emerald Stateroom

153ft² – 170ft²

CAT D CAT E

Important Information: The cabin and deck plans, sizes and photographs are an indication only and are subject to variation. * Due to safety, the Sun Deck will be closed when travelling under low bridges.

Tour Code 812PO 2027 Departure Date	RIVIERA DECK		VISTA DECK		HORIZON DECK					
	CAT E, D Emerald Stateroom		CAT C, B, R Panorama Balcony Suite		CAT A, P Panorama Balcony Suite		CAT SA Owner's One-Bedroom Suite		CAT RA Riverview Suite	
	PER PERSON TWIN	SINGLE ROOM	PER PERSON TWIN	SINGLE ROOM	PER PERSON TWIN	SINGLE ROOM	PER PERSON TWIN	SINGLE ROOM	PER PERSON TWIN	SINGLE ROOM
August 18	\$5,715	+ \$4,286	\$6,279	+ \$4,709	\$7,165	+ \$5,374	\$7,925	+ \$7,925	\$8,059	+ \$8,059

The Cabin prices above include the 7 night cruise, two nights in Lisbon, staff gratuities, local airport transfers to/from STL airport, international airport transfers (on arrival and departure day with MF air) and port charges. If you book and deposit by MAR 31, 2026, you will qualify for our free air promotion and save \$200 pp off the cabin price. After MAR 31, 2026, please add \$750 for Group Air.

Air itineraries may not be available until documents are received. Air seats are assigned by the airline for the entire group and may not be available until airport check-in. Seat changes can only be attempted at the airport and may not be possible. If specific seat assignments are vital to your reservation, we recommend booking air on your own rather than booking air with the group.

TOUR ACTIVITY LEVEL



Travelers Protection Plan (TPP) for River Cruises – \$569 (optional)

This nonrefundable fee will provide a refund to you during the instance that you have to cancel your trip. The cancellation has to be for a covered reason (see Plan for details on coverage) and we have to be notified at least one day prior to departure. If you must leave the tour early due to personal illness or the illness or death of an immediate family member, TPP will provide a refund for any unused services after the departure of the tour. Other benefits include medical expenses for illness and injury, emergency transportation, 24 hour hot line and lost or stolen baggage assistance. Return air transportation is included ONLY if your air tickets are purchased through Mayflower Cruises & Tours. Please review the Plan for details on coverage. Should you choose not to purchase our TPP, the following per person cancellation charges will be assessed for all tours and optional excursion costs:

- 121 days or more prior to departure: Deposit Amount
- 120 days to day of departure: 100% of total tour
- No refund on unused portions of the tour

Exclusions: Mayflower Cruises & Tours reserves the right to alter its Refund and Cancellation Policy when a substantial amount of cancellation or postponement of travel is attributable to: conditions resulting from an act of God, natural or man-made disaster, fire, government action, civil disorder, war, hostilities between nations, or unavailability of transportation through no fault of Mayflower Cruises & Tours. Plan and benefits offered and administered by Trip Mate, Inc.

FOR RESERVATIONS OR INFORMATION CONTACT:

HORIZONS CLUB | First State Community Bank

Jill Fletcher

(573) 705 3187

jfletcher@fscb.com