



**FREE
AIRFARE
+\$200<sup>PER
PERSON</sup>
SAVINGS**
WHEN BOOKED BY
03/31/2026

11 DAYS • 23 MEALS • AMSTERDAM > ZURICH

TULIP TIME ON JEWELS OF THE RHINE

the Netherlands • Germany • France • Switzerland

Tour Dates: April 11 – 21, 2027

Sail the romantic Rhine River in spring and visit the world-famous Keukenhof Gardens, home to seven million blooms. Explore Amsterdam's charm before cruising past windmills and tulip fields. Enjoy guided tours of Cologne, Koblenz, and Strasbourg, and visit Schwetzingen Palace. Conclude your journey with two nights in Lucerne, Switzerland, nestled amid the breathtaking Swiss Alps.





Sail the romantic Rhine River

DAY 1 Depart the USA

Depart the USA on your overnight flight to Amsterdam, the Netherlands.

DAY 2 Amsterdam, the Netherlands

Welcome to Amsterdam, a fascinating 700-year-old city of picturesque canals, world class museums, and cafés. You will be met and transferred from the airport to your Emerald Cruises Star-Ship. Become acquainted with the amenities of your ship, or begin exploring the city. This evening, join your fellow travelers for dinner onboard. [Meal: D](#)

DAY 3 Amsterdam

This morning, depart by coach for an included visit to Keukenhof Gardens. Discover why it's called the 'Garden of Europe' as you admire gorgeous flowers at the peak of tulip season. Colorful displays

of tulips, hyacinths, orchids and other flowers stretch as far as the eye can see as you stroll along the perfectly manicured meandering paths. Return to the ship for your first day cruising through the Dutch countryside, passing windmills and sailing through locks towards the Rhine River. Tonight, enjoy a welcome reception and gala dinner.

[Meals: B, L, D](#)

DAY 4 Düsseldorf > Cologne, Germany

Join a walking tour of Düsseldorf, a vibrant city renowned for its stylish boutiques and charming Old Town. Stroll along the picturesque Rhine River, admire the stunning architecture, and discover hidden gems off the beaten path. Later this day we will arrive in Cologne, famous for its Gothic Cathedral. This afternoon you can immerse yourself in the city's lively atmosphere, indulge in delicious local cuisine, and experience the unique charm of the city. [Meals: B, L, D](#)

DAY 5 Koblenz

Cruise to the 2000-year-old town of Koblenz, situated at the confluence of the Rhine and Moselle Rivers. Enjoy a walking tour of Koblenz seeing the German Corner where the 2 rivers meet and the Church of Our Lady. This afternoon, sail through the spectacular UNESCO World-Heritage Rhine Gorge. Pass countless medieval castles and vineyards lining the shores of this section of the river, with photo opportunities around every bend. See the infamous Lorelei statue and Pfalzgrafenstein Castle, built on an island in the middle of the river as a medieval toll station. [Meals: B, L, D](#)

DAY 6 Mannheim – Schwetzingen

Relax onboard as the vessel cruises along the Rhine River to Mannheim. Upon arrival travel by coach to visit Schwetzingen Palace, famous for the beauty and harmony of its gardens. Visit the interior of the palace, along with the beautiful gardens, maintained in their original design. Today they remain a cultural heritage site of European significance, and contain more than 100 sculptures scattered throughout the grounds. Alternatively, embark on an active journey to the quaint wellness town of Bad-Dürkheim for a hike through the beautiful vineyards. [Meals: B, L, D](#)



Strasbourg, France



Chapel Bridge crosses the Reuss River in Lucerne, Switzerland

DAY 7 Kehl / Strasbourg, France

Travel by coach across the river to Strasbourg, the capital of the Alsace region in France. Your guided walking tour includes the Grande Île - the historical city center and UNESCO World Heritage Site. Known for its medieval black and white timber-framed buildings, old tanning houses, baroque sandstone buildings, canals and river locks, the city's star attraction is the cathedral, dominating the main square. This evening, local entertainment is performed onboard. **Meals: B, L, D**

DAY 8 Breisach, Germany / Freiburg

On today's adventure, visit the city of Freiburg, considered the 'capital of the Black Forest'. Aside from seeing the lovely sights, sample true Black Forest delicacies from the lively market in the city center near the main cathedral. Alternatively, join a guided bike tour in Breisach.

Meals: B, L, D

DAY 9 Huningue, France - Lucerne, Switzerland

After breakfast, disembark the ship in Huningue and begin your Swiss adventure. Depart by coach to Lucerne, a picturesque town surrounded by mountains and meadows. An included walking tour highlights the city's landmark - the famous 14th-century Chapel Bridge. See the 17th-century Renaissance Town Hall and town squares, all set amongst the beautiful backdrop of the Swiss Alps. The remainder of the day is at leisure. **Meal: B**

DAY 10 Lucerne

Your last day is left free of planned activities. Explore on your own, or join the optional excursion to Mt. Pilatus - a mountain overlooking Lucerne that offers a unique alpine experience! This evening, get together for an included dinner at the hotel. **Meals: B, D**

DAY 11 Lucerne / USA

Bid 'auf wiedersehen' to Europe and return home with memories of life enriching experiences from your European adventure and cruise along the Rhine River during tulip time. **Meal: B**

Itinerary and excursions are subject to change.

Additional excursions will be released approximately 180 days prior to departure.



EXCEPTIONAL INCLUSIONS

- 23 Meals: 9 breakfasts, 6 lunches and 8 dinners
- Airport transfers on tour dates when air is provided by Mayflower Cruises & Tours
- Visit four countries
- Seven-nights in a suite or stateroom of your choice onboard the vessel
- First-class service by an English-speaking crew
- Onboard Activity Manager will support all EmeraldACTIVE excursions and host daily onboard wellness activities, games, classes and evening entertainment
- All gratuities included
- Explore the magnificent Keukenhof Gardens
- Shore excursions with English-speaking local guides
- Visit UNESCO World Heritage Sites
- Personal listening device for shore excursions
- All meals included onboard
- Variety of international cuisine
- Complimentary regional wines, beer and soft drinks with onboard lunches and dinners
- Complimentary bottled water in your stateroom
- Complimentary WiFi onboard
- Complimentary bicycles onboard for use ashore
- All port charges included
- Two-night hotel stay and touring in Lucerne

CRUISE AND HOTEL ACCOMMODATIONS

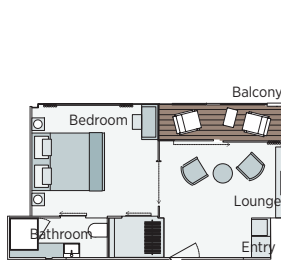
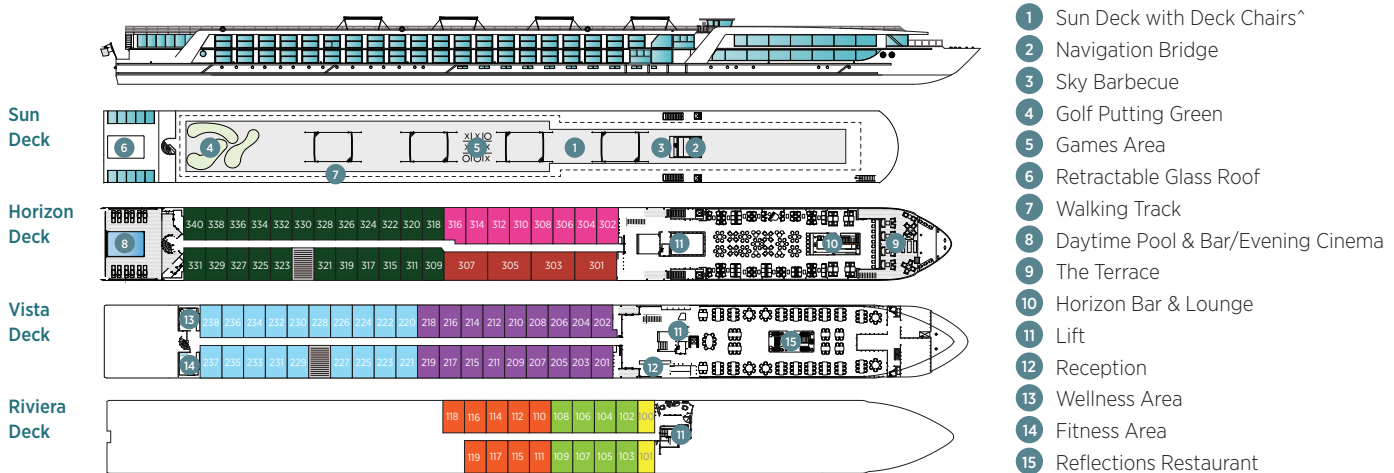
Days 2 through 8 - Aboard an Emerald Cruises Star-Ship

Days 9 and 10 - Hotel Europe or similar, Lucerne, Switzerland

Pre-cruise hotel stays available in Amsterdam. Call for details.

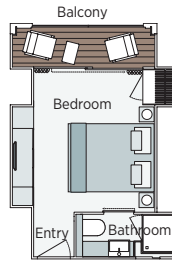
EMERALD STAR-SHIPS

Built: 2014-2026 **Cabins:** 91 **Guests:** 180 **Length:** 443 ft. **Crew:** 52



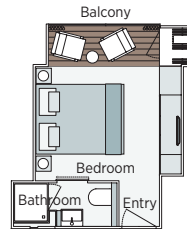
Owner's One-Bedroom Suite
285ft² – 315ft²

CAT SA



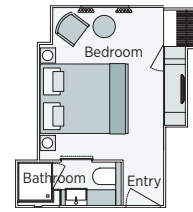
Grand Balcony Suite
207ft² – 210ft²

CAT S



Emerald Panorama Balcony Suite
160ft² – 189ft²

CAT A CAT B CAT C



Emerald Stateroom
153ft² – 170ft²

CAT D CAT E

Important Information: The cabin and deck plans, sizes and photographs are an indication only and are subject to variation. ^ Due to safety, the Sun Deck will be closed when travelling under low bridges.

Tour Code 802PC 2027 Departure Date	RIVIERA DECK		VISTA DECK		HORIZON DECK					
	CAT E, D		CAT C, B		CAT A		CAT S		CAT SA	
	Emerald Stateroom		Panorama Balcony Suite		Panorama Balcony Suite		Grand Balcony Suite		Owner's One-Bedroom Suite	
	PER PERSON TWIN	SINGLE ROOM	PER PERSON TWIN	SINGLE ROOM	PER PERSON TWIN	SINGLE ROOM	PER PERSON TWIN	SINGLE ROOM	PER PERSON TWIN	SINGLE ROOM
April 11	\$6,875	\$11,104	\$7,785	\$12,704	\$8,255	\$13,524	\$8,751	N/A	\$9,755	N/A

Pricing includes Tour, Air from Washington Dulles Airport, Transportation to and from Washington Dulles Airport, and Travelers Protection Plan

Air itineraries may not be available until documents are received. Air seats are assigned by the airline for the entire group and may not be available until airport check-in. Seat changes can only be attempted at the airport and may not be possible. If specific seat assignments are vital to your reservation, we recommend booking air on your own rather than booking air with the group.

The Trip Payment Schedule is as Follows:

- 1st Deposit of \$1,500 per person is due at time of booking (This includes the Non-Refundable \$569 cost for Travelers Protection Plan)
- 2nd Deposit of \$1,000 per person is due by May 25, 2026
- Final payment is due NO later than November 13, 2026

Travelers Protection Plan (TPP) for River Cruises – \$569 per person Included (Non-Refundable)

This nonrefundable fee will provide a refund to you during the instance that you have to cancel your trip. The cancellation has to be for a covered reason (see Plan for details on coverage) and we have to be notified at least one day prior to departure. If you must leave the tour early due to personal illness or the illness or death of an immediate family member, TPP will provide a refund for any unused services after the departure of the tour. Other benefits include medical expenses for illness and injury, emergency transportation, 24 hour hot line and lost or stolen baggage assistance. Return air transportation is included ONLY if your air tickets are purchased through Mayflower Cruises & Tours. Please review the Plan for details on coverage. Should you choose not to purchase our TPP, the following per person cancellation charges will be assessed for all tours and optional excursion costs:

- 121 days or more prior to departure: Deposit Amount
- 120 days to day of departure: 100% of total tour
- No refund on unused portions of the tour

Exclusions: Mayflower Cruises & Tours reserves the right to alter its Refund and Cancellation Policy when a substantial amount of cancellation or postponement of travel is attributable to: conditions resulting from an act of God, natural or man-made disaster, fire, government action, civil disorder, war, hostilities between nations, or unavailability of transportation through no fault of Mayflower Cruises & Tours. Plan and benefits offered and administered by Trip Mate, Inc.



FOR RESERVATIONS OR INFORMATION CONTACT:



1-800-692-7804
or 717-528-4125
info@wolfsbus.com

